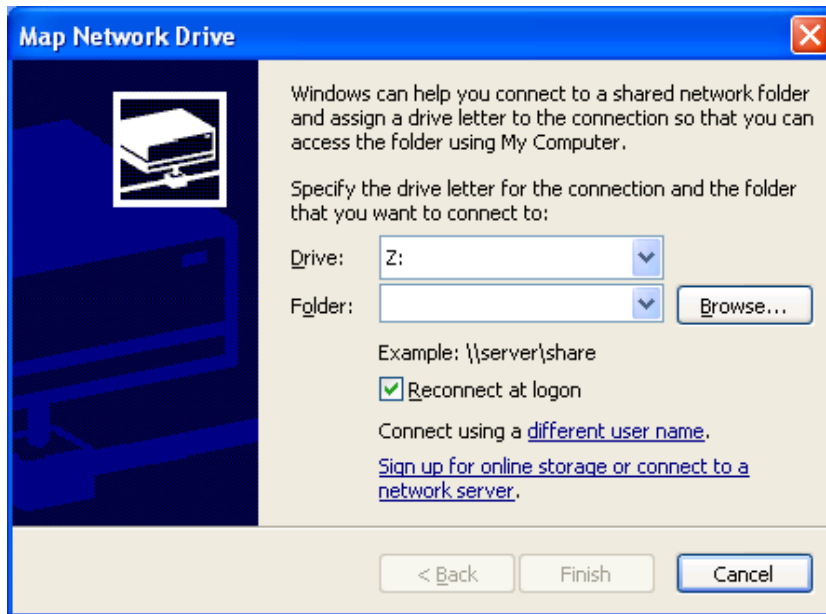
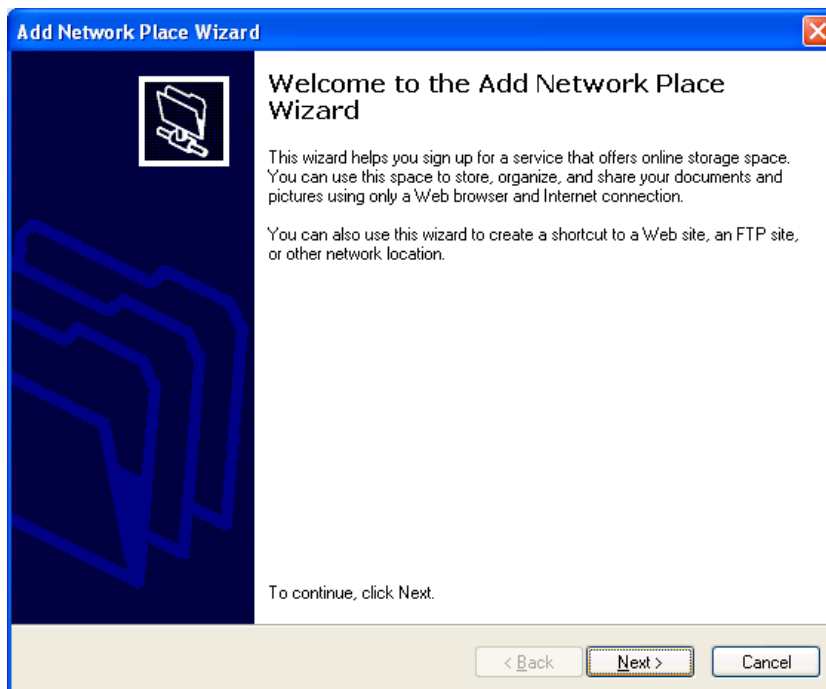


## How to Connect to soVision's FTP with MS Windows XP

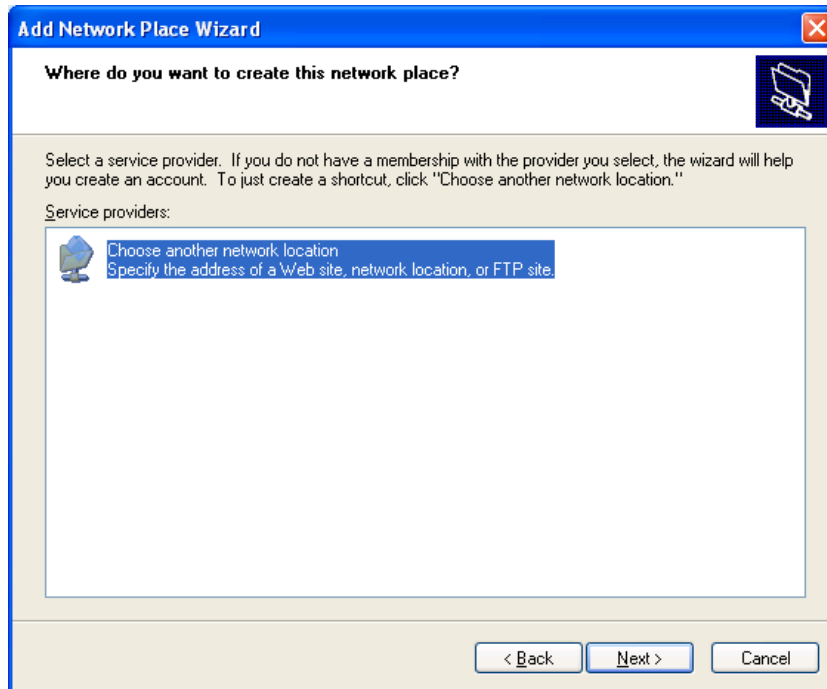
1. Click the **Start button**, and then click **My Computer** to open the My Computer window.
2. Click **Tools** and then select **Map Network Drive**.
3. Click **Sign up for online storage or connect to a network server**.



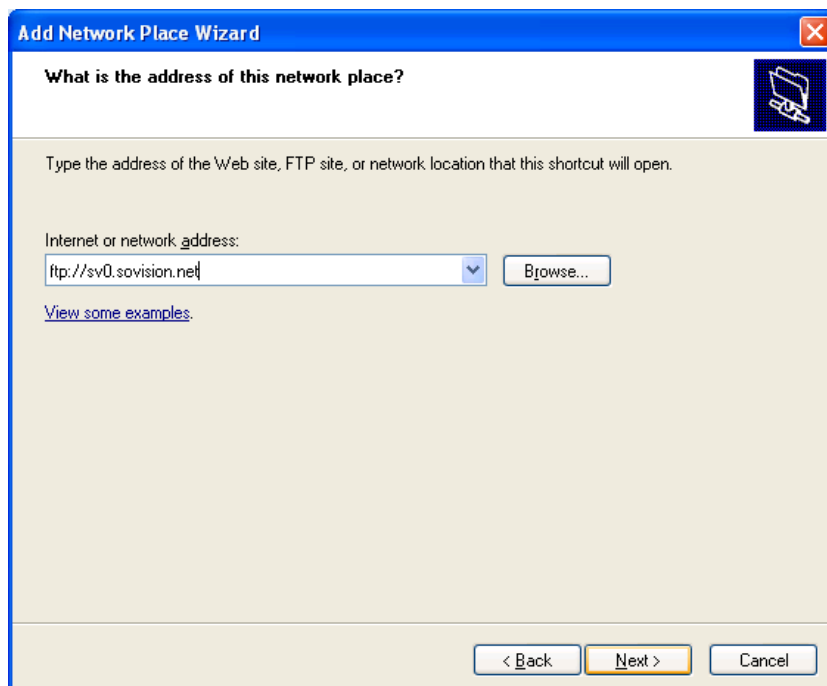
4. Click **Next** in the Add Network Location wizard.



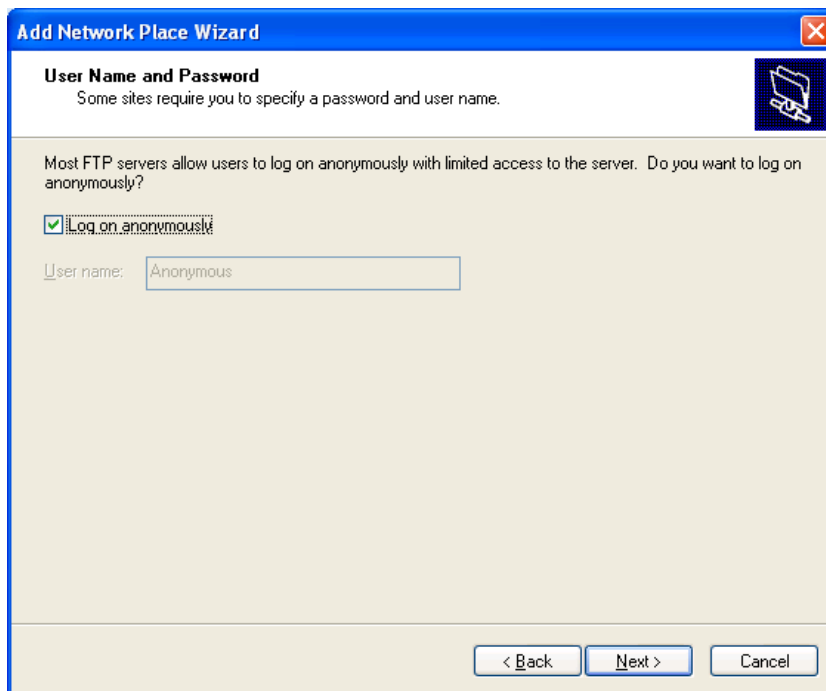
5. Click **Choose another network location** and then click **Next**.



6. Type in **ftp://sv0.sovision.net** and then click **Next**.

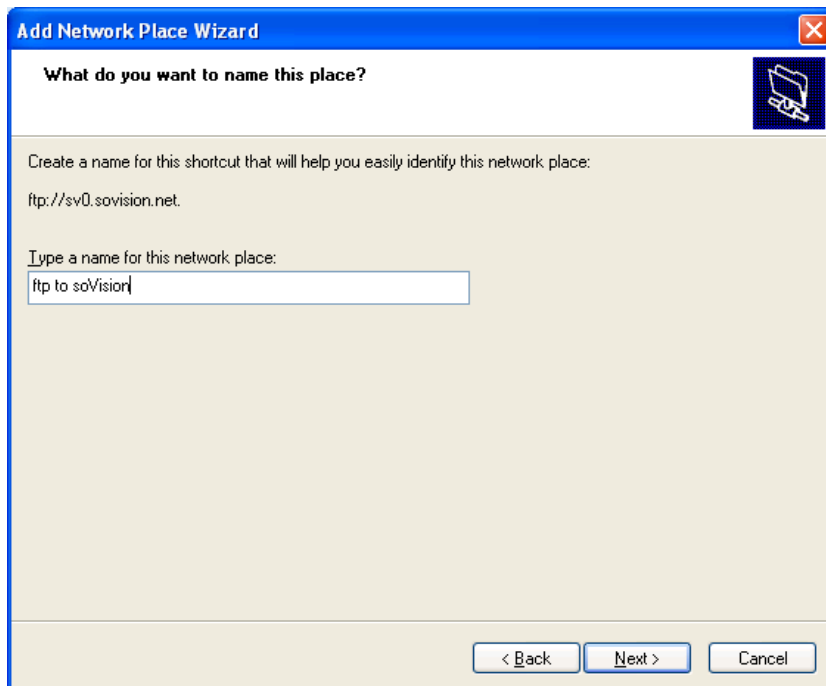


7. Leave **Log On Anonymously** checked because you will enter your user name and password later. Click **Next**.



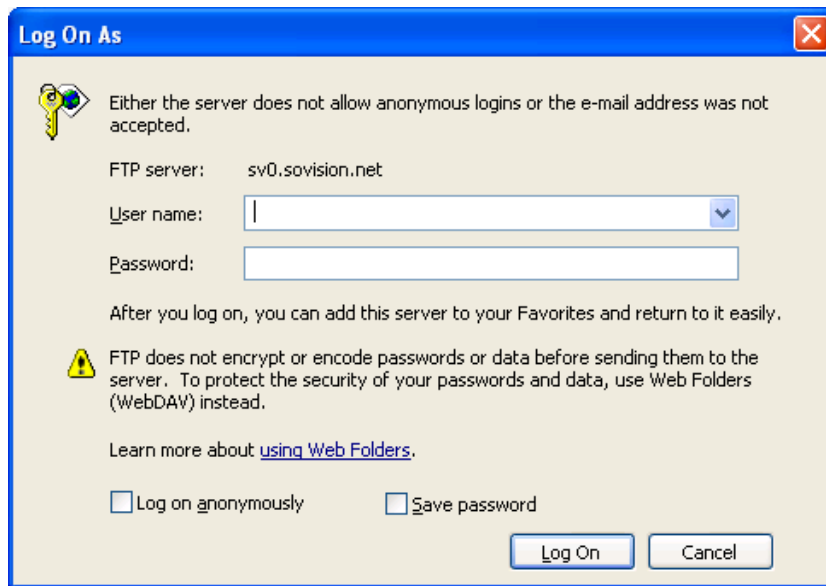
The screenshot shows the 'Add Network Place Wizard' dialog box. The title bar reads 'Add Network Place Wizard'. The main heading is 'User Name and Password' with a sub-heading 'Some sites require you to specify a password and user name.' Below this, a question asks: 'Most FTP servers allow users to log on anonymously with limited access to the server. Do you want to log on anonymously?'. A checkbox labeled 'Log on anonymously' is checked. Below the checkbox is a text input field labeled 'User name:' containing the text 'Anonymous'. At the bottom of the dialog are three buttons: '< Back', 'Next >', and 'Cancel'.

8. Give this mapped drive a name and then press **Next**.



The screenshot shows the 'Add Network Place Wizard' dialog box. The title bar reads 'Add Network Place Wizard'. The main heading is 'What do you want to name this place?'. Below this, a sub-heading asks: 'Create a name for this shortcut that will help you easily identify this network place:'. The text 'ftp://sv0.sovision.net.' is displayed. Below this is another sub-heading: 'Type a name for this network place:'. A text input field contains the text 'ftp to soVision'. At the bottom of the dialog are three buttons: '< Back', 'Next >', and 'Cancel'.

9. Click **Finish** and this mapped folder will open for the first time.
10. A login window will pop up asking you for your password to log on to your FTP site.



Your new network work connection will be stored in **My Network Places** which can be found in the **Start** menu.

