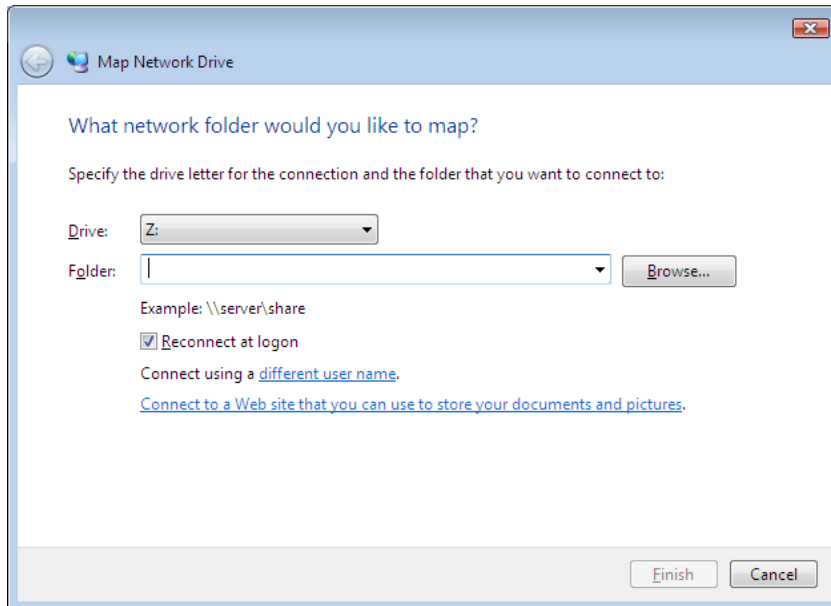
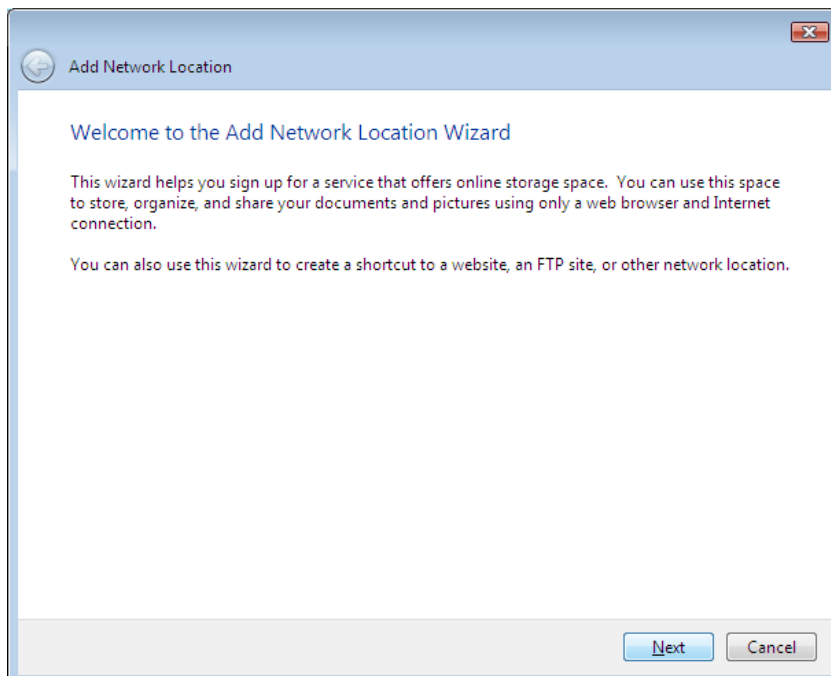


How to Connect to soVision's FTP with MS Windows Vista

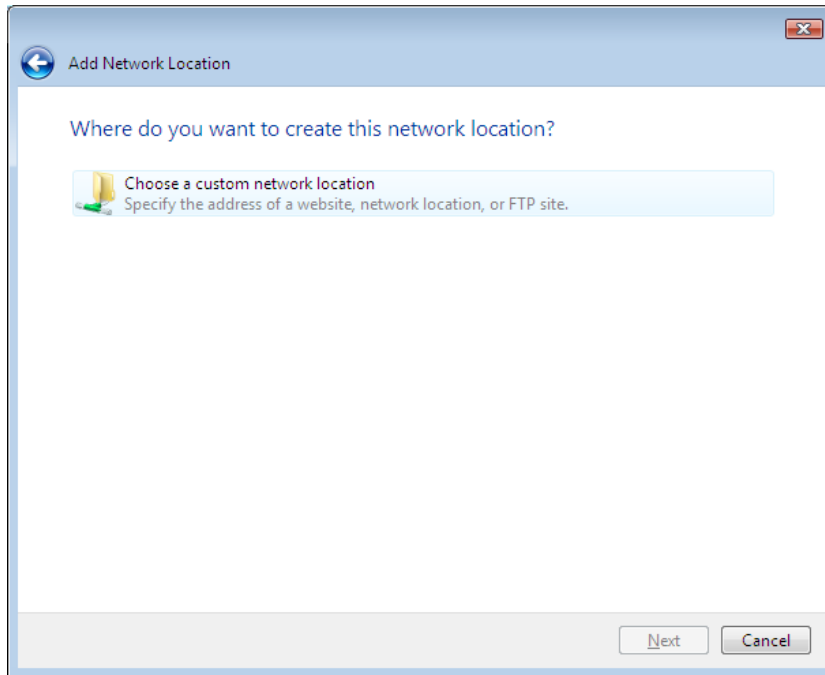
1. Click the **Start button**, and then click **Computer** to open the computer window.
2. Click **Map Network Drive** in the upper right corner of the window.
3. Click **Connect to a website that you can use to store documents and pictures in the Map Network Drive window.**



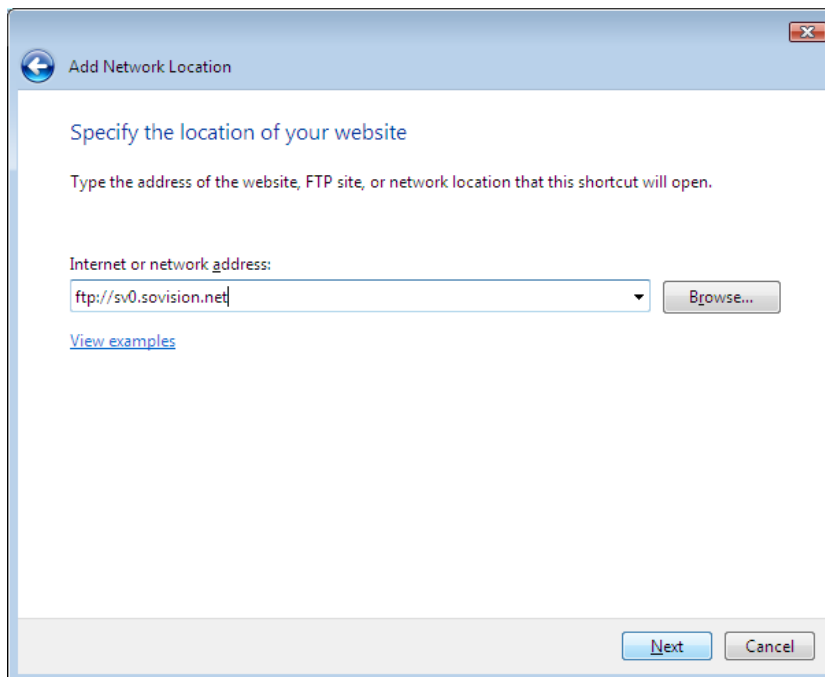
4. Click **Next** in the Add Network Location wizard.



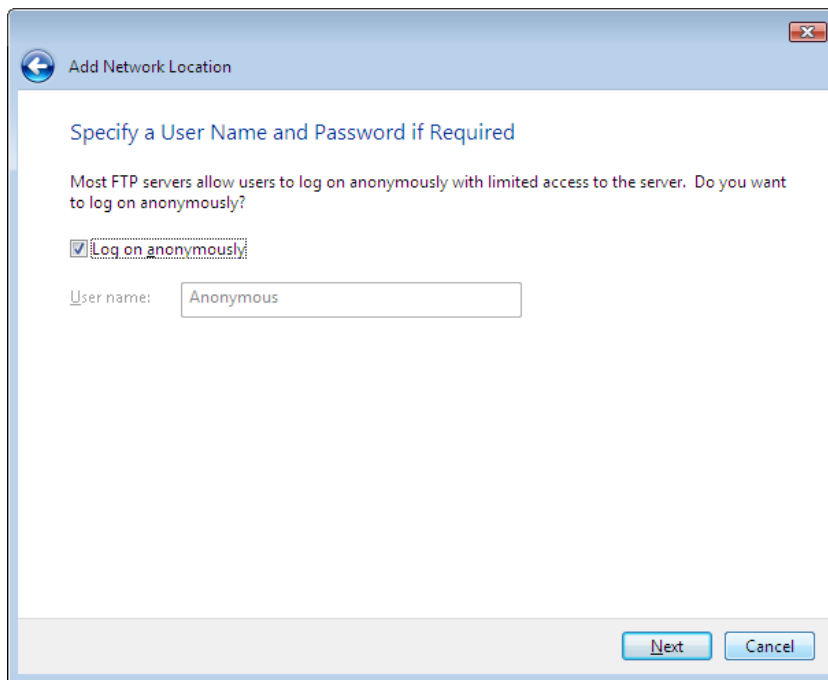
5. Click **Choose a Custom Network Location** and then click **Next**.



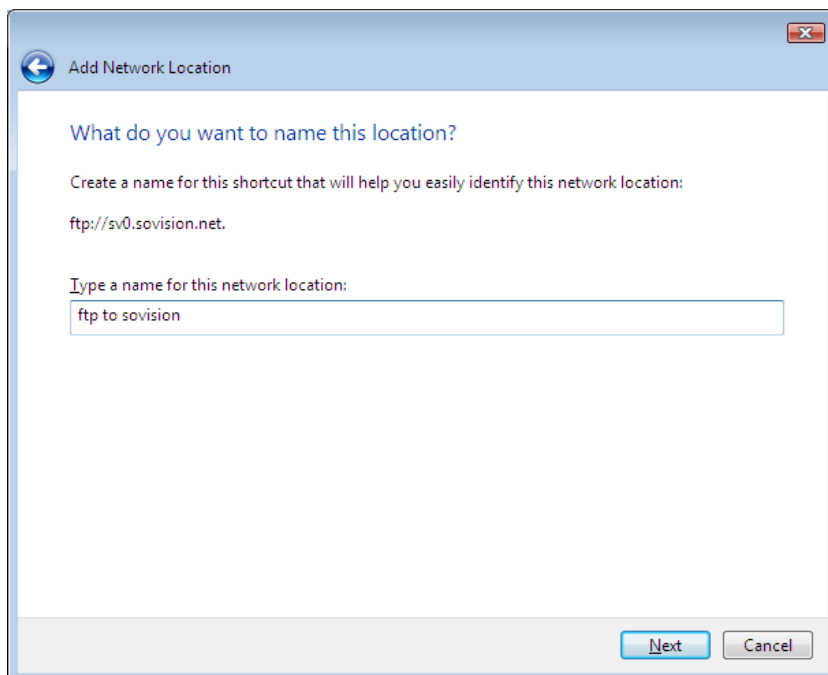
6. Type in **ftp://sv0.sovision.net** and then click **Next**.



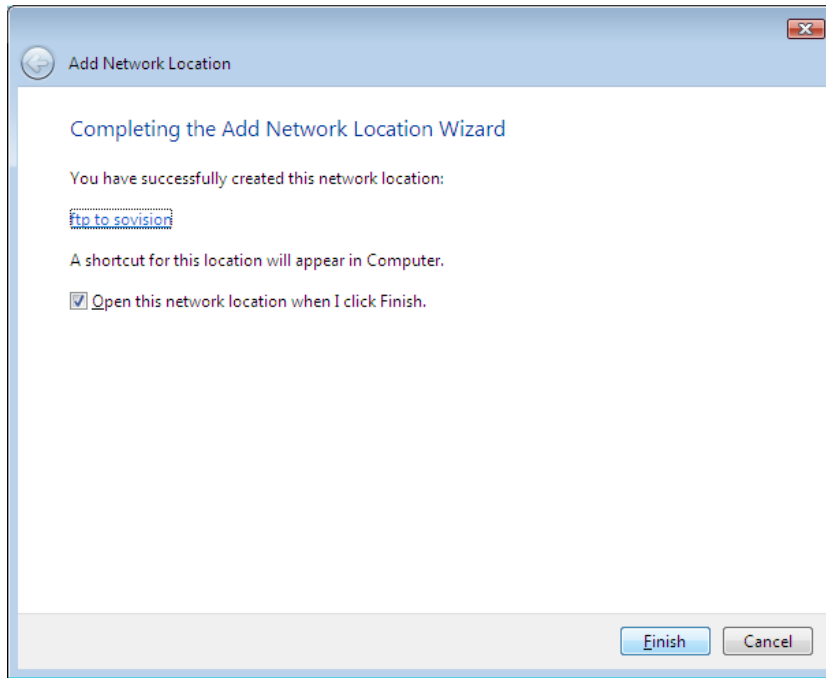
7. Leave **Log On Anonymously** checked because you will enter your user name and password later. Click **Next**.



8. Give this mapped drive a name and then press **Next**.



9. Click **Finish** and this mapped folder will open for the first time.



10. A login window will pop up asking you for your password to log on to your FTP site. Your new network work connection will be stored in **Computer** which can be found in the **Start** menu.